

## Adding field in ODK

By Puth Chan Choth

**Purpose:** This is a research on ODK to add a field when the form (xml) is already uploaded to ODK aggregate. If this is success it can help users to successfully add the field without losing the data that field staff is collected.

### **Testing with String field**

#### **First version:**

```
<h:html xmlns="http://www.w3.org/2002/xforms" xmlns:ev="http://www.w3.org/2001/xml-events"
xmlns:h="http://www.w3.org/1999/xhtml" xmlns:jr="http://openrosa.org/javarosa"
xmlns:orx="http://openrosa.org/xforms/" xmlns:xsd="http://www.w3.org/2001/XMLSchema">
```

```
<h:head>
```

```
<h:title>calculation_form</h:title>
```

```
<model>
```

```
<instance>
```

```
<calculation_form id="calculation_form" version="2012072301"><formhub><uuid/></formhub>
```

```
<amount/>
```

```
<tip/>
```

```
<sum/>
```

```
<display/>
```

```
</calculation_form>
```

```
</instance>
```

```
<bind nodeset="/calculation_form/formhub/uuid" type="string"
calculate=""62177cfc88bf451aae53177fdb74c274"" />
```

```
<bind nodeset="/calculation_form/amount" type="decimal"/>
```

```
<bind nodeset="/calculation_form/tip" type="decimal"/>
```

```
<bind calculate="/calculation_form/amount*/calculation_form/tip div 100"
nodeset="/calculation_form/sum" type="string"/>
```

```
<bind nodeset="/calculation_form/display" readonly="true()" type="string"/>
```

```

</model>
</h:head>
<h:body>
  <input ref="/calculation_form/amount">
    <label>What was the price of the meal?</label>
  </input>
  <input ref="/calculation_form/tip">
    <label>Tip in %</label>
  </input>
  <input ref="/calculation_form/display">
    <label>
      <output value="/calculation_form/tip"/>% tip for your meal is:<output
value="/calculation_form/sum"/></label></input>
</h:body>
</h:html>

```

**Second version:**

```

<h:html xmlns="http://www.w3.org/2002/xforms" xmlns:ev="http://www.w3.org/2001/xml-events"
xmlns:h="http://www.w3.org/1999/xhtml" xmlns:jr="http://openrosa.org/javarosa"
xmlns:orx="http://openrosa.org/xforms/" xmlns:xsd="http://www.w3.org/2001/XMLSchema">
  <h:head>
    <h:title>calculation_form</h:title>
  <model>
    <instance>
      <calculation_form id="calculation_form" version="2012072302"><formhub><uuid/></formhub>
      <restaurant/>
      <amount/>
      <tip/>

```

```

    <sum/>

    <display/>

  </calculation_form>

</instance>

  <bind nodeset="/calculation_form/formhub/uuid" type="string"
  calculate="3c8993d14e1a4d47a65ae95b7b9bd5ce" />

  <bind nodeset="/calculation_form/restaurant" type="string"/>

  <bind nodeset="/calculation_form/amount" type="decimal"/>

  <bind nodeset="/calculation_form/tip" type="decimal"/>

  <bind calculate="/calculation_form/amount*/calculation_form/tip div 100"
  nodeset="/calculation_form/sum" type="string"/>

  <bind nodeset="/calculation_form/display" readonly="true()" type="string"/>

</model>

</h:head>

<h:body>

  <input ref="/calculation_form/restaurant">

  <label>Restaurant</label>

  </input>

  <input ref="/calculation_form/amount">

  <label>What was the price of the meal?</label>

  </input>

  <input ref="/calculation_form/tip">

  <label>Tip in %</label>

  </input>

  <input ref="/calculation_form/display">

  <label>

```

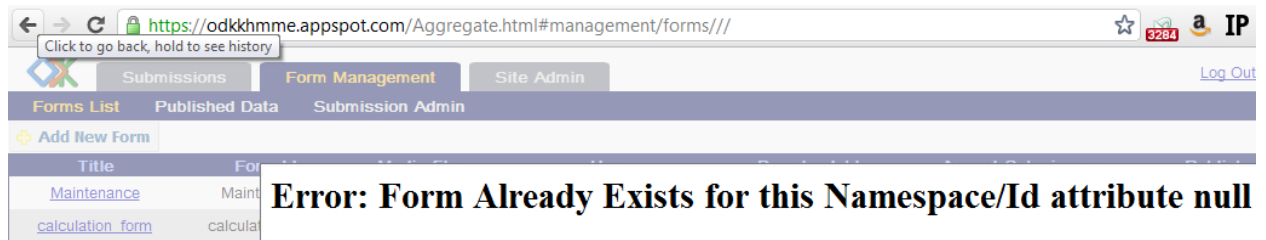
```
<output value="/calculation_form/tip"/>% tip for your meal is:<output  
value="/calculation_form/sum"/></label></input>
```

```
</h:body>
```

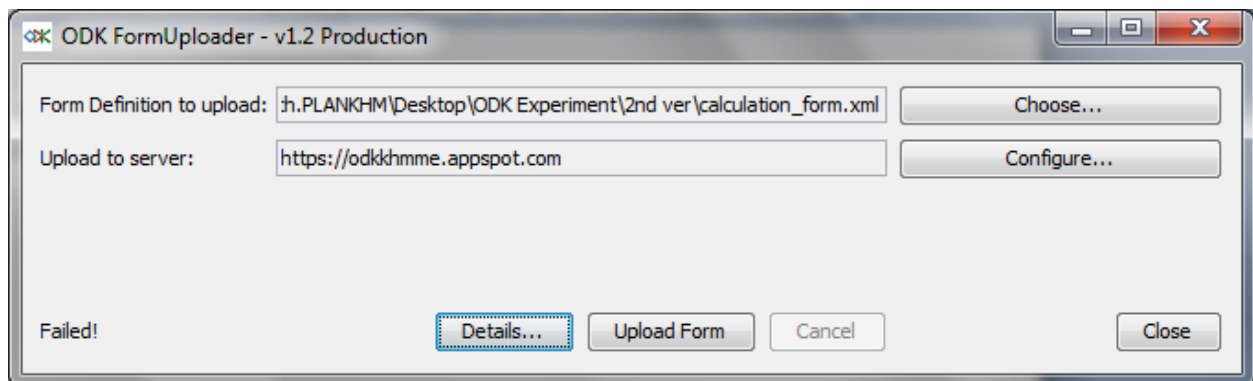
```
</h:html>
```

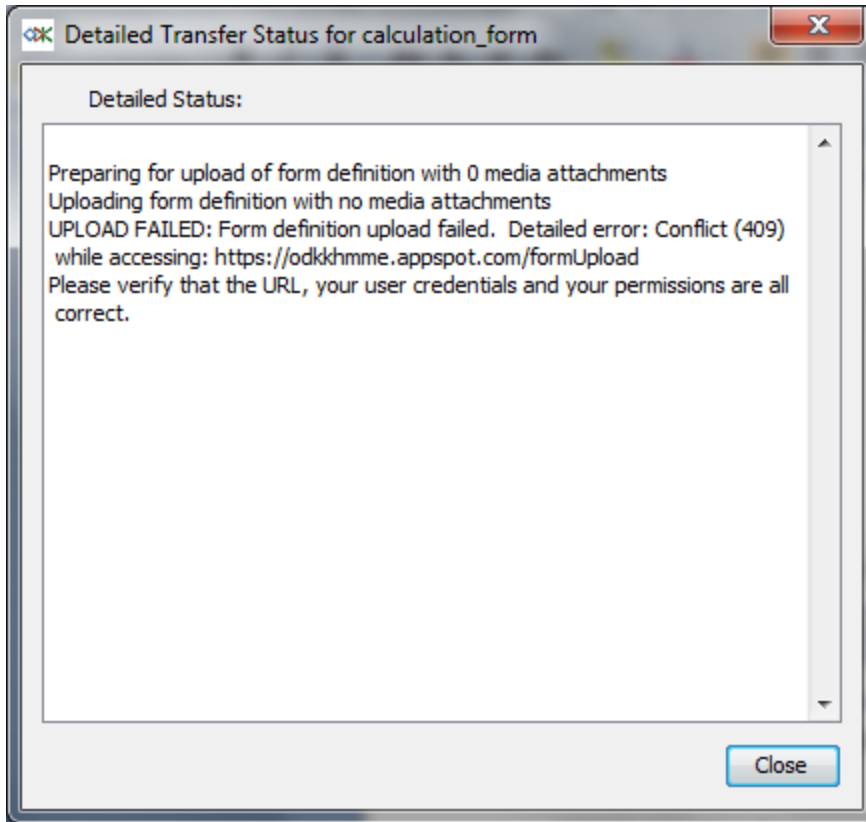
**Error encounter:**

In ODK aggregate site



ODK FormUploader





### **Testing with Simple Cascading Selection (refers to item label and item value)**

#### **First version:**

```
<h:html xmlns="http://www.w3.org/2002/xforms" xmlns:ev="http://www.w3.org/2001/xml-events"
xmlns:h="http://www.w3.org/1999/xhtml" xmlns:jr="http://openrosa.org/javarosa"
xmlns:orx="http://openrosa.org/xforms/" xmlns:xsd="http://www.w3.org/2001/XMLSchema">
```

```
<h:head>
```

```
<h:title>Cascading_Selection</h:title>
```

```
<model>
```

```
<instance>
```

```
<Cascading_Selection id="Cascading_Selection"
version="2012072301"><formhub><uuid/></formhub>
```

```
<head_name/>
```

```
<sex/>
```

```
<id_poor/>
```

```
</Cascading_Selection>

</instance>

<bind nodeset="/Cascading_Selection/formhub/uuid" type="string"
calculate=""4cd7ffb407c1470ea328fa5e9befc804"" />

<bind nodeset="/Cascading_Selection/head_name" type="string"/>

<bind nodeset="/Cascading_Selection/sex" type="select1"/>

<bind nodeset="/Cascading_Selection/id_poor" type="select1"/>

</model>

</h:head>

<h:body>

<input ref="/Cascading_Selection/head_name">

<label>Name of Head of household</label>

</input>

<select1 ref="/Cascading_Selection/sex">

<label>Sex</label>

<item>

<label>Male</label>

<value>M</value>

</item>

<item>

<label>Female</label>

<value>F</value>

</item>

</select1>

<select1 ref="/Cascading_Selection/id_poor">

<label>ID Poor</label>
```

<hint>This is based on GIZ.</hint>

<item>

<label>Poor 1</label>

<value>Poor\_1</value>

</item>

<item>

<label>Poor 2</label>

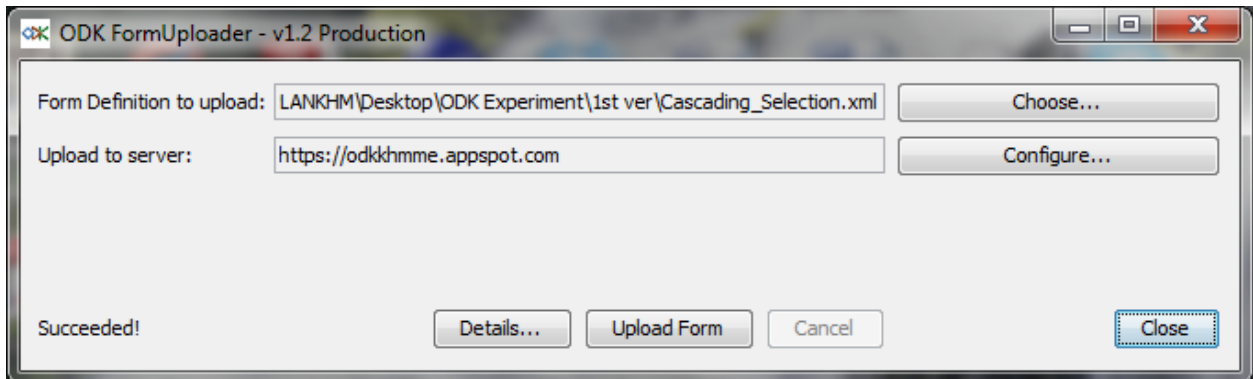
<value>Poor\_2</value>

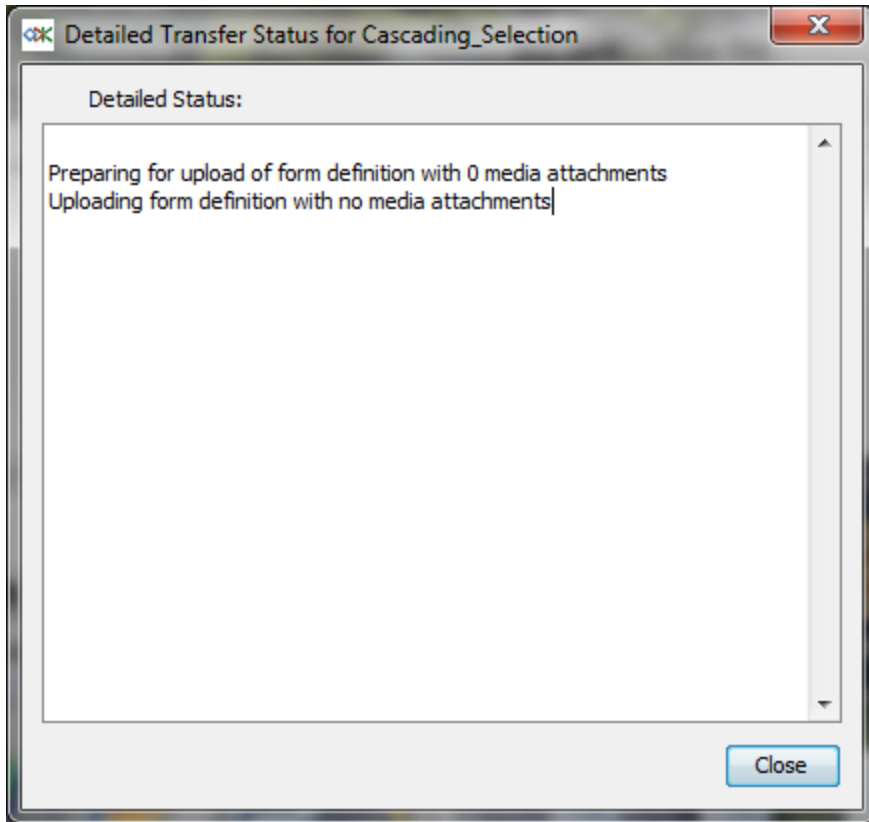
</item>

</select1>

</h:body>

</h:html>





**Second version:**

```
<h:html xmlns="http://www.w3.org/2002/xforms" xmlns:ev="http://www.w3.org/2001/xml-events"
xmlns:h="http://www.w3.org/1999/xhtml" xmlns:jr="http://openrosa.org/javarosa"
xmlns:orx="http://openrosa.org/xforms/" xmlns:xsd="http://www.w3.org/2001/XMLSchema">
```

```
<h:head>
```

```
  <h:title>Cascading_Selection</h:title>
```

```
<model>
```

```
  <instance>
```

```
    <Cascading_Selection id="Cascading_Selection"
version="2012072302"><formhub><uuid/></formhub>
```

```
      <head_name/>
```

```
      <sex/>
```

```
      <id_poor/>
```

```
    </Cascading_Selection>
```



```
</instance>

<bind nodeset="/Cascading_Selection/formhub/uuid" type="string"
calculate=""d62db7b1612840f28ca436505270e9b9"" />

<bind nodeset="/Cascading_Selection/head_name" type="string"/>

<bind nodeset="/Cascading_Selection/sex" type="select1"/>

<bind nodeset="/Cascading_Selection/id_poor" type="select1"/>

</model>

</h:head>

<h:body>

<input ref="/Cascading_Selection/head_name">

<label>Name of Head of household</label>

</input>

<select1 ref="/Cascading_Selection/sex">

<label>Sex</label>

<item>

<label>Male</label>

<value>M</value>

</item>

<item>

<label>Female</label>

<value>F</value>

</item>

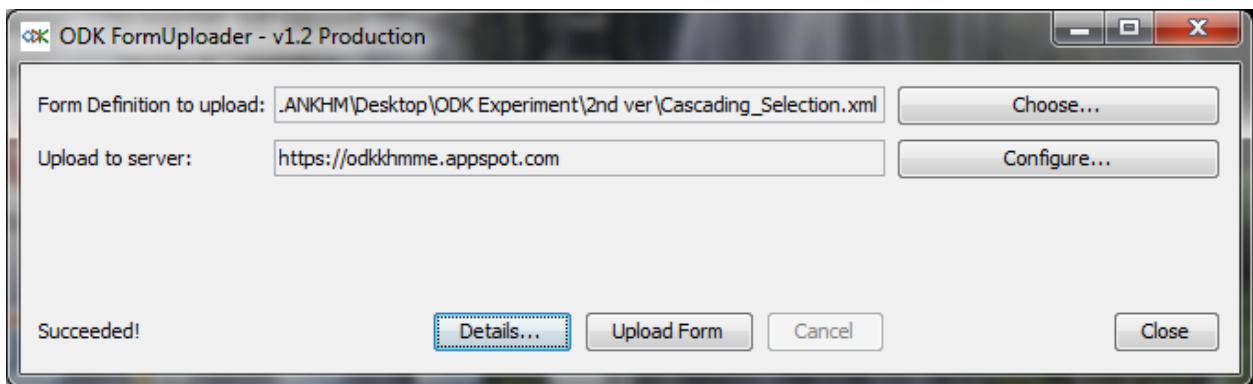
</select1>

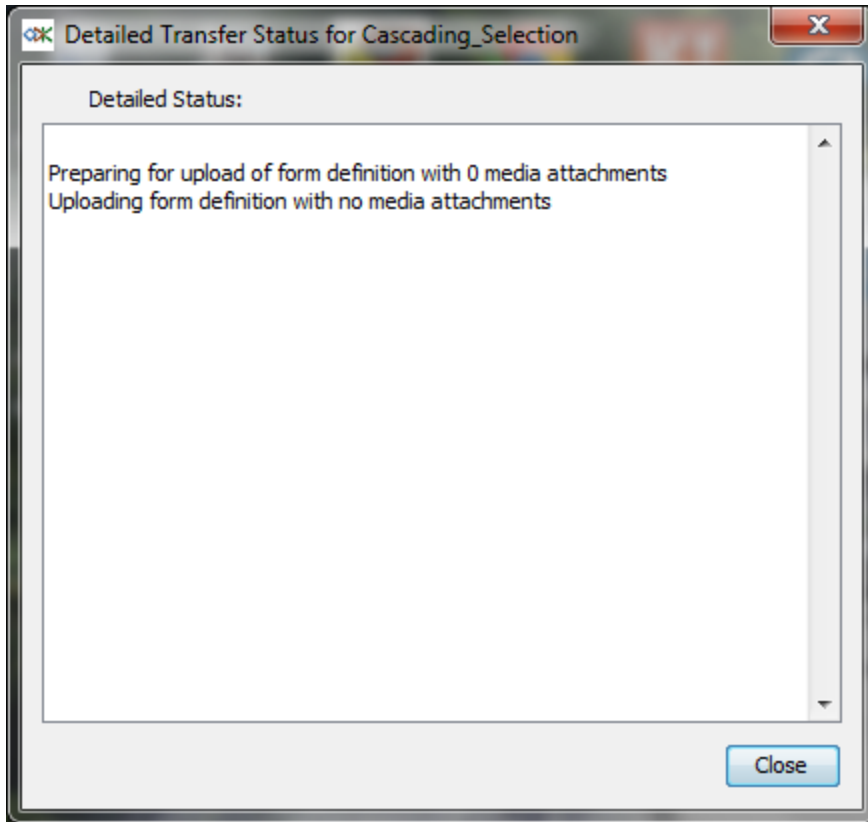
<select1 ref="/Cascading_Selection/id_poor">

<label>ID Poor</label>

<hint>This is based on GIZ.</hint>
```

```
<item>
  <label>Poor 1</label>
  <value>Poor_1</value>
</item>
<item>
  <label>Poor 2</label>
  <value>Poor_2</value>
</item>
<item>
  <label>Unknown</label>
  <value>Unknown</value>
</item>
</select1>
</h:body>
</h:html>
```

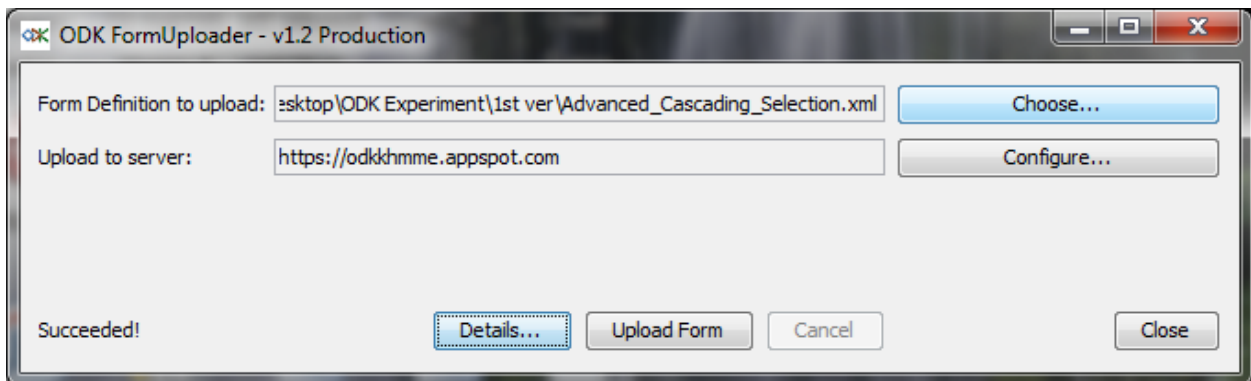




**Testing with Advanced Cascading Selection (refers to country location hierarchy ..etc..)**

**First version:**

It does not have the yellow highlight as in the second version.



**Second version:**

```
<h:html xmlns="http://www.w3.org/2002/xforms" xmlns:ev="http://www.w3.org/2001/xml-events"
xmlns:h="http://www.w3.org/1999/xhtml" xmlns:jr="http://openrosa.org/javarosa"
xmlns:orx="http://openrosa.org/xforms/" xmlns:xsd="http://www.w3.org/2001/XMLSchema">
```

```
<h:head>
```

```

<h:title>Advanced_Cascading_Selection</h:title>

<model>

  <instance>

    <Advanced_Cascading_Selection id="Advanced_Cascading_Selection"
    version="2012072302"><formhub><uuid/></formhub>

      <location_province/>

      <location_district_in_siem_reap/>

      <location_district/>

      <location_commune_in_banteay_srei/>

      <location_commune_in_angkor_thom/>

      <location_commune/>

      <location_village_in_leang_dai/>

      <location_village_in_khnar_sanday/>

      <location/>

    </Advanced_Cascading_Selection>

  </instance>

  <bind nodeset="/Advanced_Cascading_Selection/formhub/uuid" type="string"
  calculate=""1d113850eadf4d178bd164bdb4b74bab"" />

  <bind nodeset="/Advanced_Cascading_Selection/location_province" type="select1"/>

  <bind nodeset="/Advanced_Cascading_Selection/location_district_in_siem_reap"
  relevant="/Advanced_Cascading_Selection/location_province='siem_reap'" type="select1"/>

  <bind calculate="if(/Advanced_Cascading_Selection/location_province='siem_reap',
  /Advanced_Cascading_Selection/location_district_in_siem_reap, 'ERROR')"
  nodeset="/Advanced_Cascading_Selection/location_district" type="string"/>

  <bind nodeset="/Advanced_Cascading_Selection/location_commune_in_banteay_srei"
  relevant="/Advanced_Cascading_Selection/location_district='banteay_srei'" type="select1"/>

  <bind nodeset="/Advanced_Cascading_Selection/location_commune_in_angkor_thom"
  relevant="/Advanced_Cascading_Selection/location_district='angkor_thom'" type="select1"/>

```

```
<bind calculate="if(/Advanced_Cascading_Selection/location_district='banteay_srei',
/Advanced_Cascading_Selection/location_commune_in_banteay_srei,
if(/Advanced_Cascading_Selection/location_district='angkor_thom',
/Advanced_Cascading_Selection/location_commune_in_angkor_thom, 'ERROR'))"
nodeset="/Advanced_Cascading_Selection/location_commune" type="string"/>
```

```
<bind nodeset="/Advanced_Cascading_Selection/location_village_in_leang_dai"
relevant="/Advanced_Cascading_Selection/location_commune='leang_dai'" type="select1"/>
```

```
<bind nodeset="/Advanced_Cascading_Selection/location_village_in_khnar_sanday"
relevant="/Advanced_Cascading_Selection/location_commune='khnar_sanday'" type="select1"/>
```

```
<bind calculate="if(/Advanced_Cascading_Selection/location_commune='leang_dai',
/Advanced_Cascading_Selection/location_village_in_leang_dai,
if(/Advanced_Cascading_Selection/location_commune='khnar_sanday',
/Advanced_Cascading_Selection/location_village_in_khnar_sanday, 'ERROR'))"
nodeset="/Advanced_Cascading_Selection/location" type="string"/>
```

```
</model>
```

```
</h:head>
```

```
<h:body>
```

```
<select1 ref="/Advanced_Cascading_Selection/location_province">
```

```
<label>Province:</label>
```

```
<item>
```

```
<label>Siem Reap</label>
```

```
<value>siem_reap</value>
```

```
</item>
```

```
</select1>
```

```
<select1 ref="/Advanced_Cascading_Selection/location_district_in_siem_reap">
```

```
<label>District:</label>
```

```
<item>
```

```
<label>Angkor Thom</label>
```

```
<value>angkor_thom</value>
```

</item>

<item>

<label>Banteay Srei</label>

<value>banteay\_srei</value>

</item>

</select1>

<select1 ref="/Advanced\_Cascading\_Selection/location\_commune\_in\_banteay\_srei">

<label>Commune:</label>

<item>

<label>Khnar Sanday</label>

<value>khnar\_sanday</value>

</item>

</select1>

<select1 ref="/Advanced\_Cascading\_Selection/location\_commune\_in\_angkor\_thom">

<label>Commune:</label>

<item>

<label>Leang Dai</label>

<value>leang\_dai</value>

</item>

</select1>

<select1 ref="/Advanced\_Cascading\_Selection/location\_village\_in\_leang\_dai">

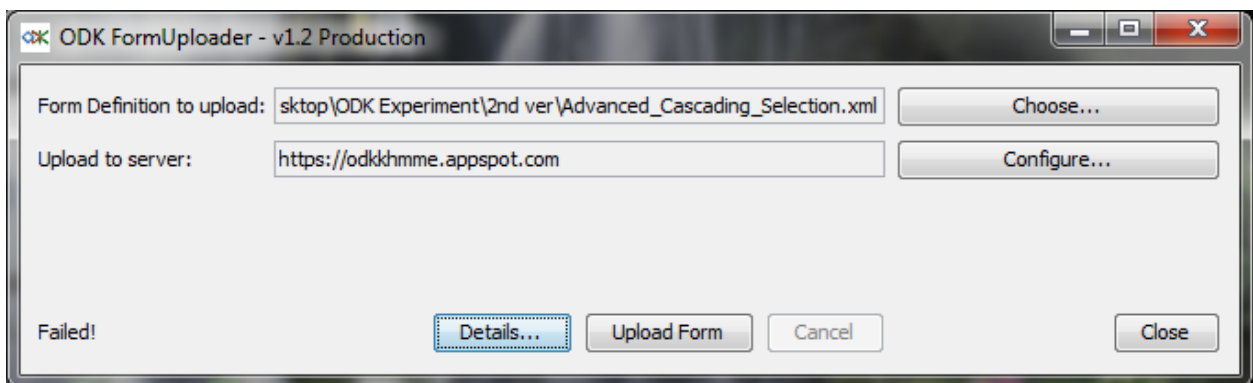
<label>Village:</label>

<item>

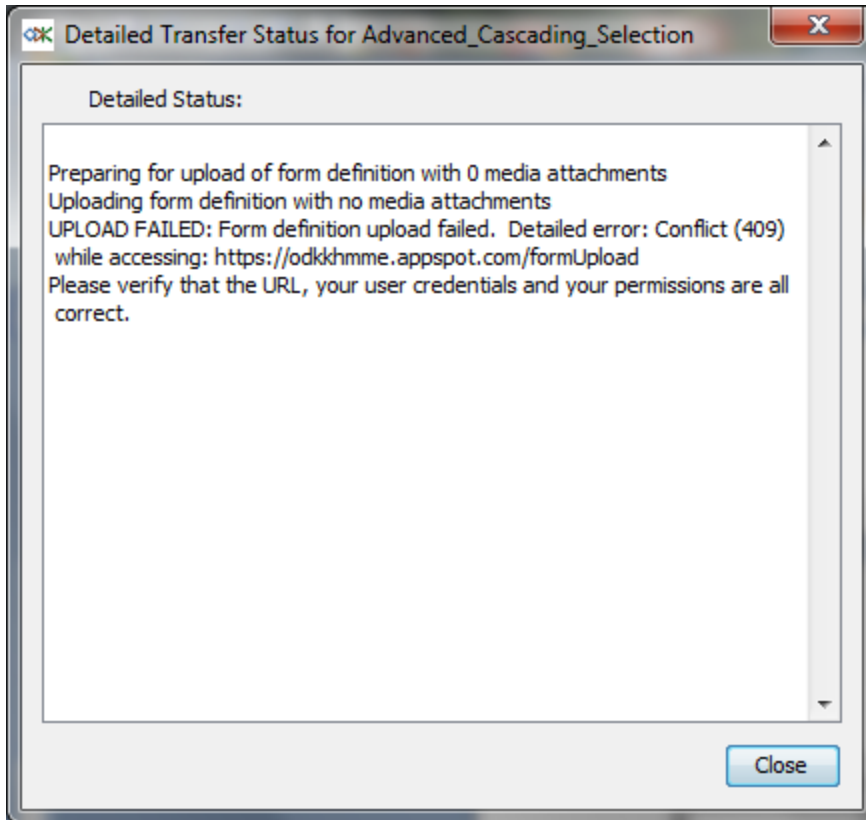
<label>Trapeang Svay</label>

<value>trapeang\_svay</value>

```
</item>
<item>
  <label>Ta Prok</label>
  <value>ta_prok</value>
</item>
</select1>
<select1 ref="/Advanced_Cascading_Selection/location_village_in_khnar_sanday">
  <label>Village:</label>
  <item>
    <label>Sanday</label>
    <value>sanday</value>
  </item>
  <item>
    <label>Prei</label>
    <value>prei</value>
  </item>
</select1>
</h:body>
</h:html>
```



**Error encounter:**



**Conclusion**

It is not possible to:

- Add the field into the form which submitted to ODK collect
- Add any new location hierarchy into the form which submitted to ODK collect